

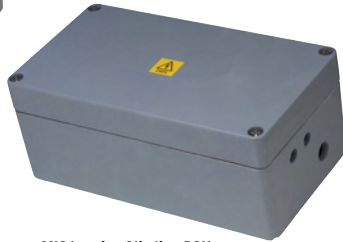
Datasheet

MIC1 Series PSUs, brackets and accessories

Precision through flexibility



MIC1 series standard PSU



MIC1 series Slimline PSU

Forward Vision's range of brackets and accessories have been designed to work seamlessly with the MIC1 series of fully functional PTZ cameras to offer flexible mounting, power and functionality options.

A full range of Power Supply Units (PSUs) are available to ensure the MIC1 series can be installed in a variety of locations, including low voltage and mobile applications. The PSU housing also has slots for optional cards, such as the 8-channel alarm card or washer pump drive. Certain PSUs have extra functionality built-in as standard and there are specific variants for IR and thermal models.

Forward Vision's unique all-in-one power/video/telemetry cable is available in lengths of 2,10,20 & 25 metres. The cable is required to run from the camera head via a single connector to the PSU. The power/video/telemetry is then split out at the PSU to the relevant control equipment and the power source.

A range of brackets are available to facilitate corner, wall and pole mounting. These are available in the standard colours of the MIC1 series, including stainless steel, and are also available in bespoke colours to match special camera builds. Shallow and deep conduit adapters add extra flexibility to mounting options.

For further information and application examples please visit us at FVcctv.co.uk



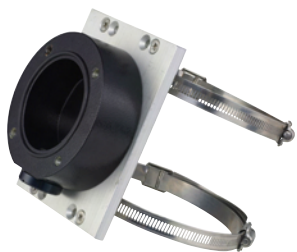
MIC-SCA-B Shallow conduit adapter with side plug in and out



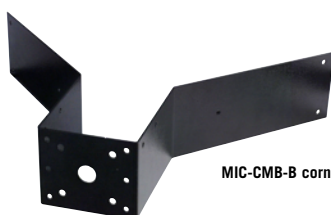
MIC-DCA-B Deep conduit adapter with side plug in and out



MIC-WMB-B with MIC1-400 aluminium attached



MIC-PMB pole mount bracket with MIC-SCA-B shallow conduit adapter attached



MIC-CMB-B corner mount bracket

Features at a glance

Full range of PSUs, brackets and accessories

Provides a best-fit solution for virtually any application

The perfect match

Brackets are available in a range of standard colours, but can also be supplied in bespoke colours to match special camera builds

Easy to use

Designed to seamlessly integrate with the MIC1 series, all PSUs, brackets and accessories are easy to install

Suitable for all MIC1 series applications

Part Number	MIC1-400, MIC1-401, MIC1-440 series Power Supply Units (PSUs)
MIC-240PSU	230V AC input power supply unit including interface for MIC1 series cameras
MIC-IR-240PSU	230V AC input power supply unit with washer drive & 4-input alarm card – only for twin infrared camera versions
MIC-SLIM-240PSU	Slimline 230V AC input power supply unit including interface for MIC1 series cameras
MIC-115PSU	115V AC input power supply unit including interface for MIC1 series cameras
MIC-IR-115PSU	115V AC input power supply unit with washer drive & 4-input alarm card – only for twin infrared camera versions
MIC-SLIM-115PSU	Slimline 115V AC input power supply unit including interface for MIC1 series cameras
MIC-24PSU	24V AC input power supply unit including interface for MIC1 series cameras
MIC-IR-24PSU	24V AC input power supply unit with washer drive & 4-input alarm card – only for twin infrared camera versions
MIC-12PSU	12V DC input power supply unit including interface for MIC1 series cameras
MIC-IR-12PSU	12V DC input power supply unit with washer drive & 4-input alarm card – only for twin infrared camera versions
MIC-ALM	8 Input alarm card for PSU (Not for IR PSU)

Part Number	MIC1-412 series Power Supply Units (PSUs)
MIC1-240-THERMAL	230V AC input power supply unit including interface for MIC1 series cameras - for use with MIC1-412 range
MIC1-115-THERMAL	115V AC input power supply unit including interface for MIC1 series cameras - for use with MIC1-412 range

Part Number	MIC1 series Bosch Bi-Phase converters (sited in the PSU)
MIC-BP3	Bosch Bi-Phase converter for IR versions of MIC1 series PSUs
MIC-BP4	Bosch Bi-Phase converter for non-IR versions of MIC1 series PSUs

Part Number	MIC1 series Cables □
MIC-2M	2m composite cable with plug for power, data & video
MIC-10M	10m composite cable with plug for power, data & video
MIC-20M	20m composite cable with plug for power, data & video
MIC-25M	25m composite cable with plug for power, data & video

Part Number	MIC1 series Bracketry
MIC-WMB-B	Wall mount bracket - black RAL9001
MIC-WMB-G	Wall mount bracket - grey RAL7001
MIC-WMB-W	Wall mount bracket - white RAL900
MIC-WMB-S	Wall mount bracket - grade 316 stainless steel (requires MIC-SPR or MIC-PMB for secure mounting due to weight)
MIC-WMB-Z	Wall mount bracket - special colour (please contact FV to discuss options)
MIC-CMB-B	Corner mount bracket - black RAL9001
MIC-CMB-G	Corner mount bracket - grey RAL7001
MIC-CMB-W	Corner mount bracket - white RAL9003
MIC-CMB-S	Corner mount bracket - grade 316 stainless steel
MIC-CMB-Z	Corner mount bracket - special colour (please contact FV to discuss options)
MIC-SCA-B	Shallow conduit adapter for 4" PCD base - black RAL9001
MIC-SCA-G	Shallow conduit adapter for 4" PCD base - grey RAL7001
MIC-SCA-W	Shallow conduit adapter for 4" PCD base - white RAL9003
MIC-SCA-S	Shallow conduit adapter for 4" PCD base - grade 316 stainless steel
MIC-SCA-Z	Shallow conduit adapter for 4" PCD base - special colour (please contact FV to discuss options)
MIC-DCA-B	Deep conduit adapter for 4" PCD base - black RAL9001
MIC-DCA-G	Deep conduit adapter for 4" PCD base - grey RAL7001
MIC-DCA-W	Deep conduit adapter for 4" PCD base - white RAL9003
MIC-DCA-S	Deep conduit adapter for 4" PCD base - grade 316 stainless steel
MIC-DCA-Z	Deep conduit adapter for 4" PCD base - special colour (please contact FV to discuss options)
MIC-SPR	Spreader plate suitable for brickwork surface mounting
MIC-PMB	Pole mount bracket (includes 2 x 90mm banding ties)

Part Number	MIC1 series Keyboards
MIC-501KBD	Keyboard controller with 3-axis joystick for 1 camera (FV PROTOCOL ONLY)
MIC-516KBD	Keyboard controller with 3-axis joystick for 1 to 16 cameras (FV PROTOCOL ONLY)
MIC-516ALM	8 Input alarm card for MIC-516KBD

Part Number	MIC1 series Accessories
MIC-WKT	Washer kit for non IR MIC1-400 models (inc. Washer pump drive card, washer nozzle and mounting brackets for wall and 4" pcd base)
MIC-WKT-IR	Washer kit for IR MIC1-400 and MIC1-412 models (inc. washer nozzle and mounting brackets for wall and 4" pcd base)
MIC-WN	Washer nozzle
MIC-WNB-PCD	Washer nozzle mounting bracket for 4" PCD base
MIC-WNB-WMB	Washer nozzle mounting bracket for wall mount bracket
MIC-GAS	Nebar gasket to fit between camera and bracket
MIC-RWB	Replacement wiper blade (single)

DEALER / DISTRIBUTOR


Specifications are subject to change without notice

MIC1_brackets_accessories_version1


**FOR FURTHER INFORMATION
ON THE FORWARD VISION
PRODUCT RANGE, PLEASE
VISIT US AT FVcctv.co.uk**
**FORWARD VISION CCTV LTD
UNIT 4
FLEET BUSINESS PARK
SANDY LANE
CHURCH CROOKHAM
HAMPSHIRE
GU52 8BF
ENGLAND**
**T 08700 113131
E info@FVcctv.co.uk**
